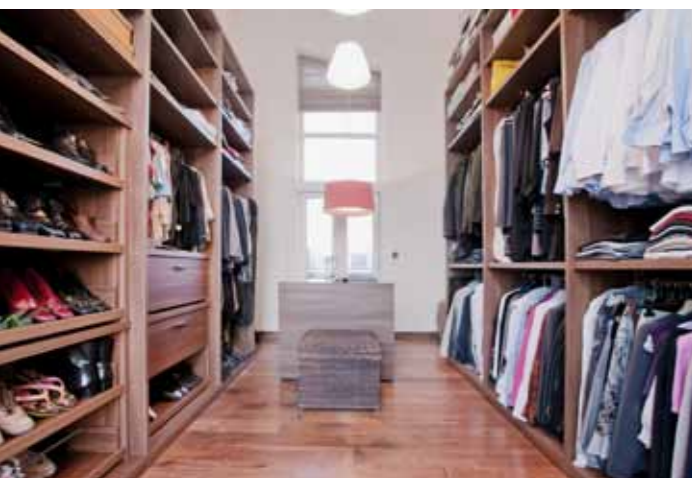
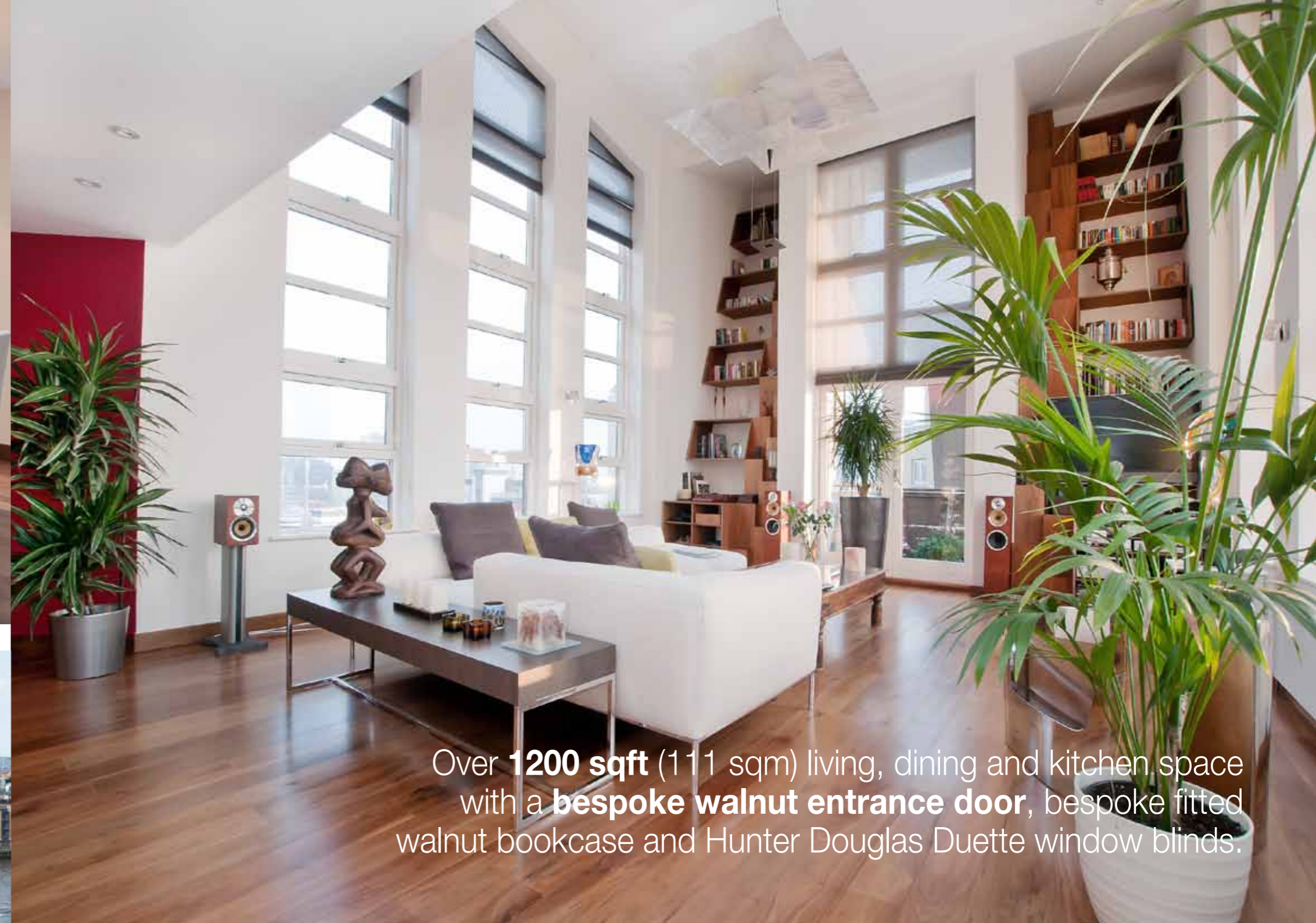


WATERMAN BUILDING, E14



King Sturge

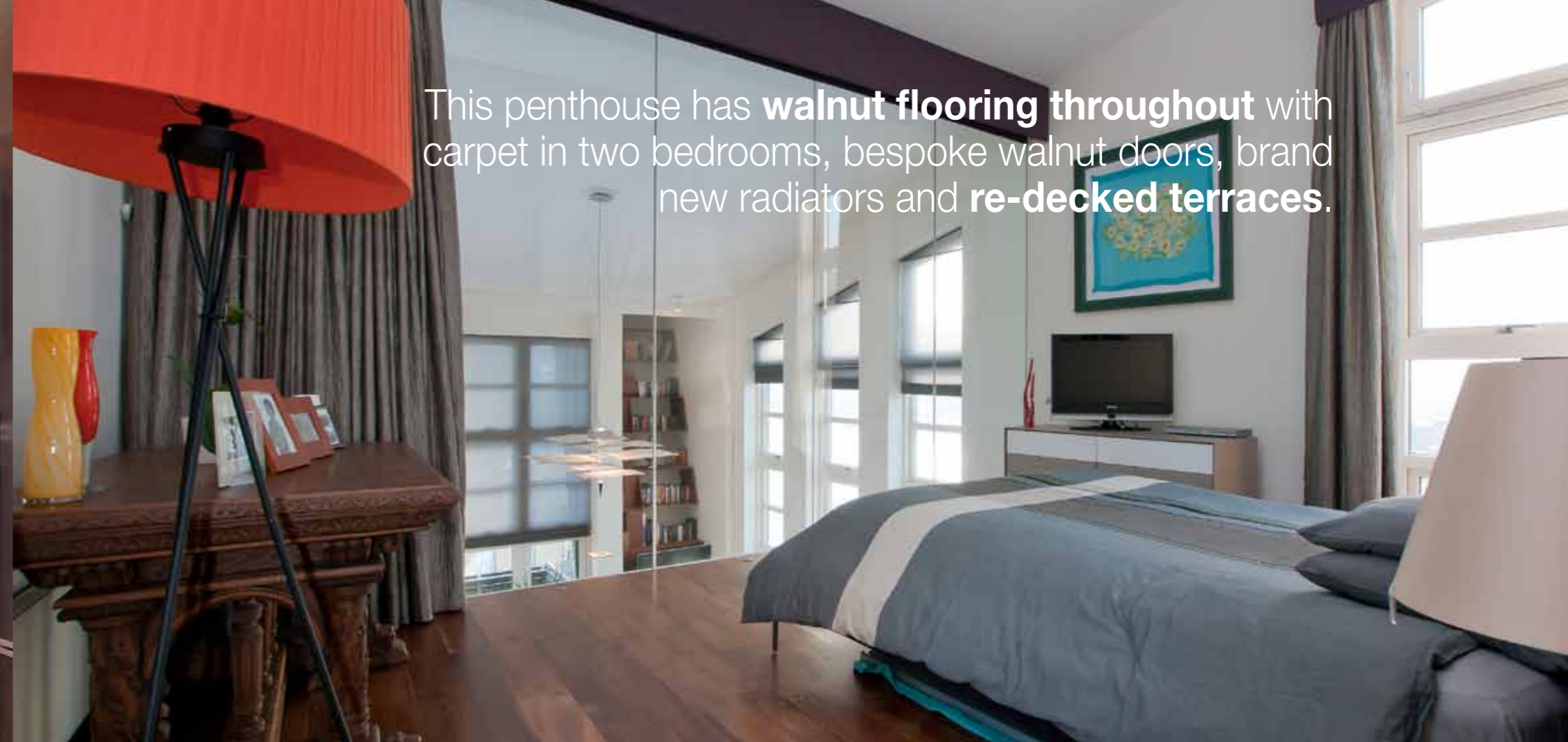
Very rare to the market, this **Millennium Harbour** three/ four bedroom, three bathroom property has been completely renovated to the **highest standard** and comprises the following:



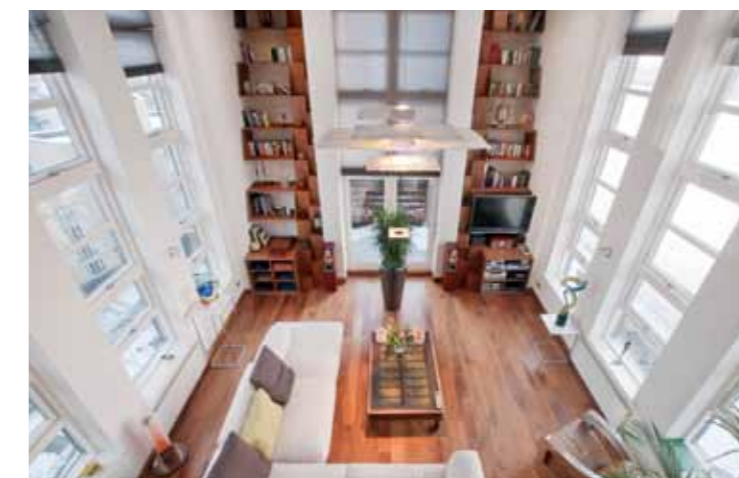
Over **1200 sqft** (111 sqm) living, dining and kitchen space with a **bespoke walnut entrance door**, bespoke fitted walnut bookcase and Hunter Douglas Duette window blinds.

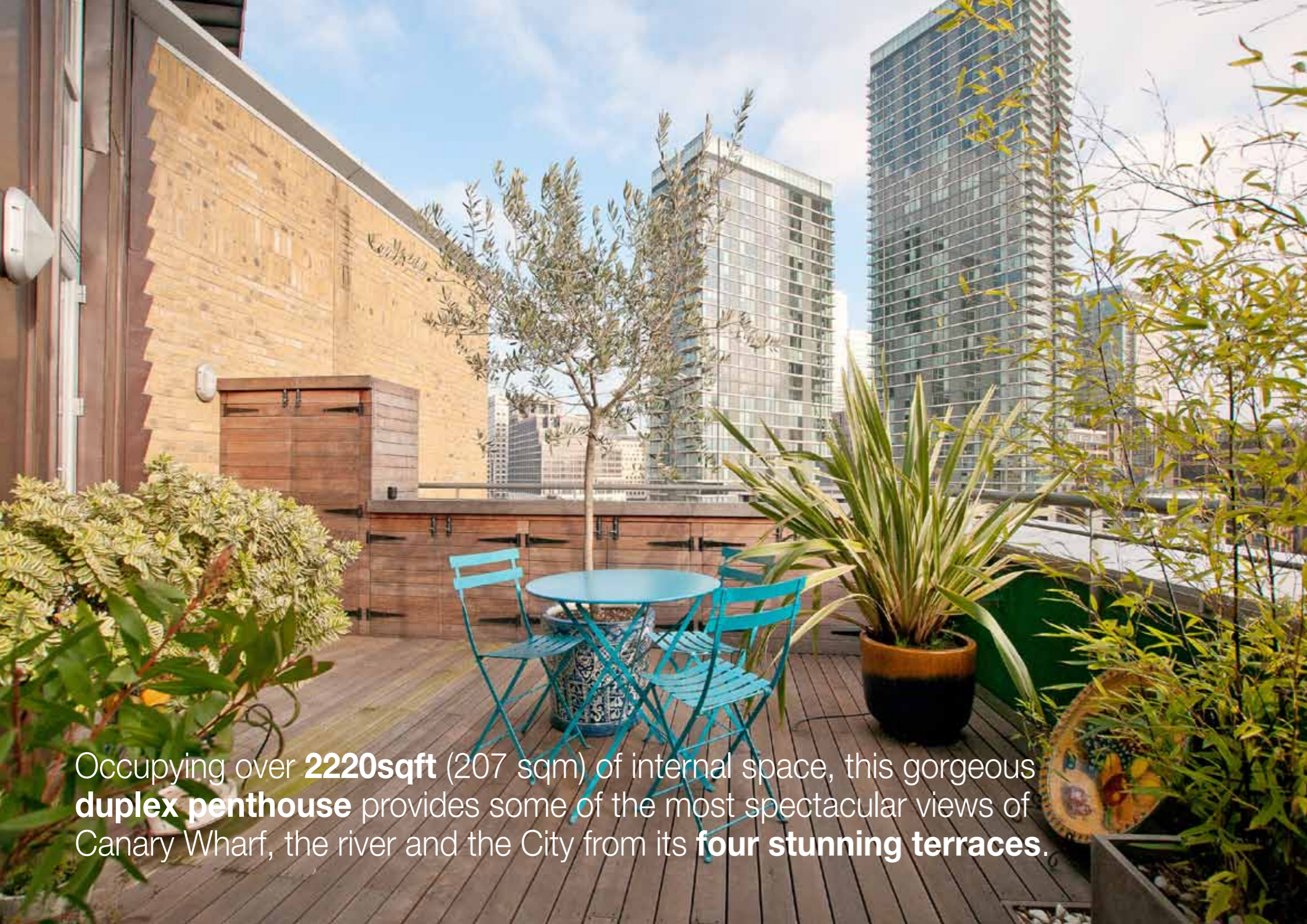


The re-designed **Nicholas Anthony** open plan kitchen contains **Gaggenau** appliances throughout and a **Barazza** four burner hob.

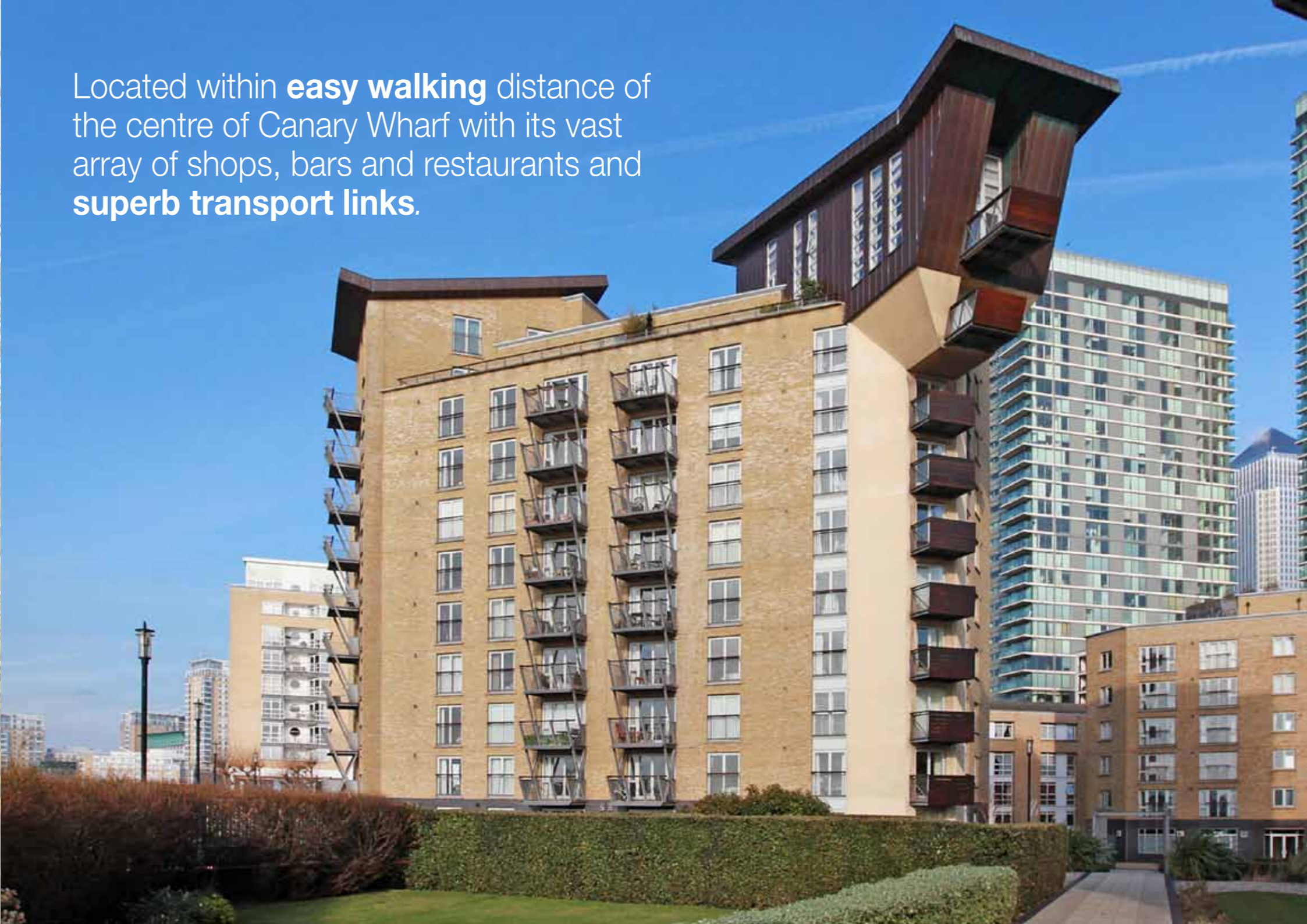


This penthouse has **walnut flooring throughout** with carpet in two bedrooms, bespoke walnut doors, brand new radiators and **re-decked terraces**.





Occupying over **2220sqft** (207 sqm) of internal space, this gorgeous **duplex penthouse** provides some of the most spectacular views of Canary Wharf, the river and the City from its **four stunning terraces**.



Located within **easy walking** distance of the centre of Canary Wharf with its vast array of shops, bars and restaurants and **superb transport links**.

WATERMAN BUILDING, E14

Approx. Gross Internal
Area 2225 sq ft
207 sq m

King Sturge
11 Westferry Circus
Canary Wharf
London E14 4HE
Tel: 0207 715 9700

www.kingsturge.co.uk



Disclaimer:

Property Misdescriptions Act 1991: The particulars contained in this brochure have been produced in good faith, are set out as a general guide and do not constitute the whole or part of any contract. All liability, in negligence or otherwise, arising from the use of these particulars is hereby excluded. Brochure by www.cpcreative.co.uk